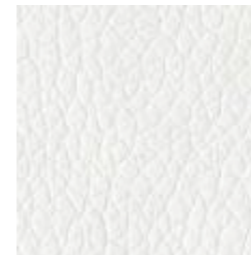
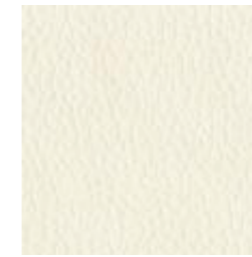


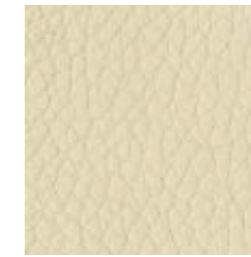
CAT A



3822  
WHITE



61  
VANILLA



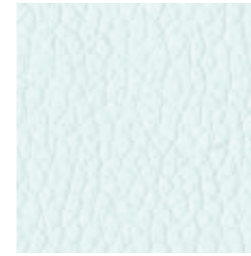
6003  
CREAM



605  
PARCHMENT



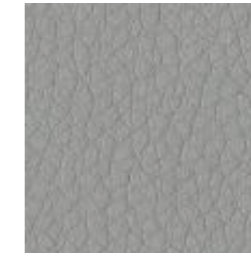
9003  
GREY



37  
LAGOON



3948  
TAUPE



905  
STEEL



54  
CITRON



608  
SANDSTONE



14  
RUST



17  
GARNET



808  
MOCHA



802  
TAN



805  
BISQUE



11  
BRICK



84  
EARTH



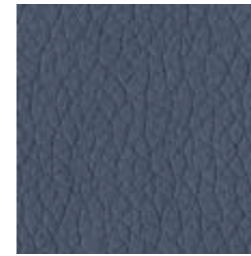
87  
CHESTNUT



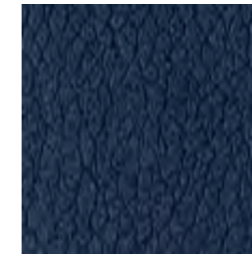
108  
WINE



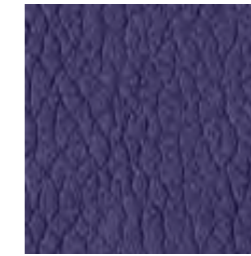
205  
SPRIG



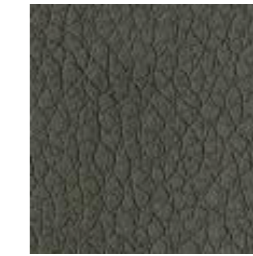
3003  
PACIFIC BLUE



3006  
NAVY



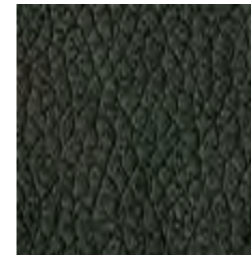
1009  
PLUM



6009  
CHINCHILLA



8020  
CHOCOLATE



9009  
BLACK

# TURNER

## SPECIFICATIONS

<b>CONTENT</b>	100% Polyurethane
<b>BACKING CONTENT</b>	70% Polyester, 30% Cotton
<b>ABRASION</b>	Exceeds 500,000 Double Rubs
<b>COLD CRACK</b>	-40°C (-40°F)
<b>TEAR STRENGTH</b>	ASTM D2261: Warp = 20lbs., Fill = 12lbs.
<b>TENSILE STRENGTH</b>	ASTM D5034: Warp = 105 lbs., Fill = 74 lbs.
<b>UV/LIGHT FASTNESS</b>	AATCC16 Class 4.5
<b>ELONGATION</b>	ASTM D5034: Warp = 23.4%, Fill = 38.1%
<b>FIRE RETARDANCY*</b>	CAL 117 - Sec. E, MVSS302, NFPA 260 Class 1, UFAC Class 1
<b>WEIGHT</b>	21.18 Ounces per Linear Yard 14.12 Ounces per Square Yard
<b>WIDTH</b>	54" (137 cm)
<b>ROLL SIZE</b>	30 Yards
<b>CLEANING INSTRUCTIONS</b>	Wipe with a soft cloth, with cold water and a mild soap. Dry immediately.

\*This term and any corresponding data refer to typical performance in the specific tests indicated and should not be construed to imply the behavior of this or any other material under actual fire conditions. This information is offered for your general guidance only. It's accurate to the best of our knowledge and is not intended to relieve the user from its responsibility to investigate and understand other pertinent sources of information and to comply with all laws and procedures applicable to the safe handling and use of this material. Final determination of the suitability of any product for an application rests with the user.

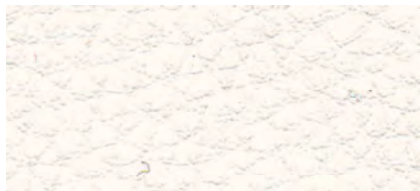
## SPÉCIFICATIONS

<b>COMPOSITION</b>	100% Polyuréthane
<b>COMPOSITION DU SUPPORT</b>	70% Polyester, 30% Coton
<b>RÉSISTANCE À L'ABRASION</b>	Excède 500 000 double frottements
<b>RÉSISTANCE DÉCHIREMENT</b>	
<b>AU FROID</b>	-40°C (-40°F)
<b>RÉSISTANCE À LA DÉCHIRURE</b>	ASTM D2261: Chaîne = 20lb., Trame = 12lb.
<b>RÉSISTANCE À LA TRACTION</b>	ASTM D5034: Chaîne = 105lb., Trame = 74lb.
<b>RÉSISTANCE AUX RAYONS</b>	
<b>DE LUMIÈRE</b>	AATCC16 Classe 4.5
<b>ÉLONGATION</b>	ASTM D5034: Chaîne = 23.4%, Trame = 38.1%
<b>RÉSISTANCE AUX FEU*</b>	CAL 117 - Sec. E, MVSS302, NFPA 260 Classe 1, UFAC Classe 1
<b>POIDS</b>	21.18 onces par verge linéaire 14.12 onces par verge carrée
<b>LARGEUR</b>	54" (137 cm)
<b>TAILLE DE ROLEAU</b>	30 verges
<b>INSTRUCTIONS DE NETTOYAGE</b>	Essuyez avec un chiffon doux, avec de l'eau froide et un savon doux puis, sécher immédiatement.

\*Les résultats rapportés d'après la norme ci-dessus ne définissent pas nécessairement les risques que représente ce matériau dans des conditions réelles d'incendie. Ces renseignements sont offerts à titre consultatif seulement. Ils sont précis, aux mieux de nos connaissances, et ne sont pas destinés à dégager l'utilisateur de sa responsabilité d'étudier et de comprendre les autres sources pertinentes de renseignements, ni de se conformer à toutes les lois et procédures relatives à la manipulation et à l'utilisation sécuritaires de ce matériau. La décision finale du type d'application du produit appartient à l'utilisateur.

## Category A

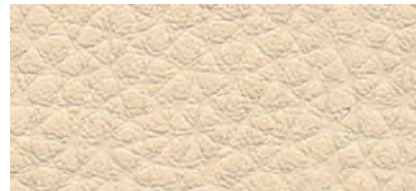
## Atlantis



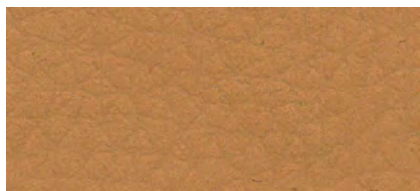
Neve 01008011



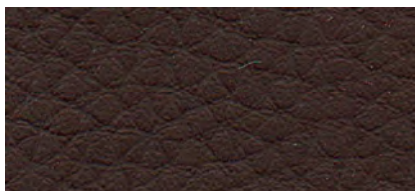
Pérola 01008018



Duna 01008003



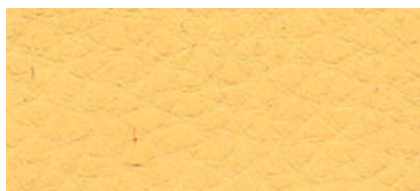
Natural 01008020



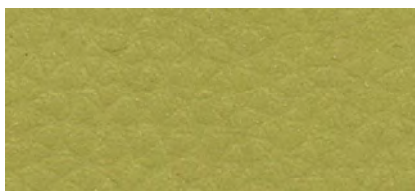
Chocolate 01008009



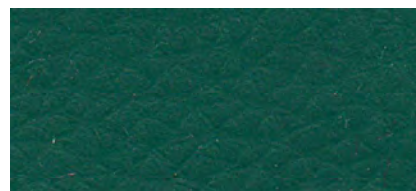
Laranja 01008010



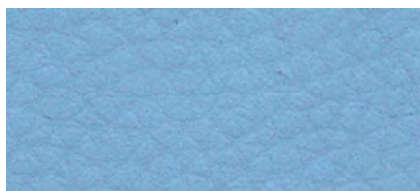
Limão 01008005



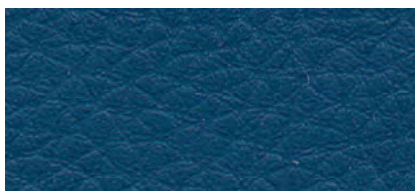
kiwi 01008013



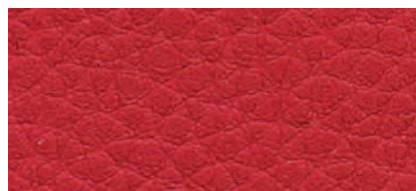
Salsa 01008008



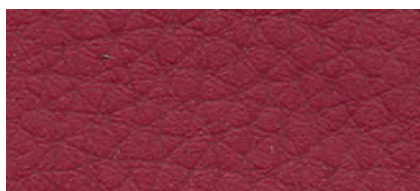
Céu 01008014



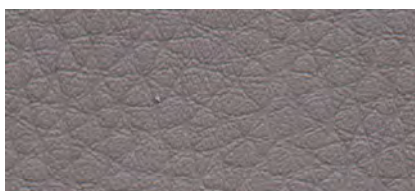
Azurite 01008002



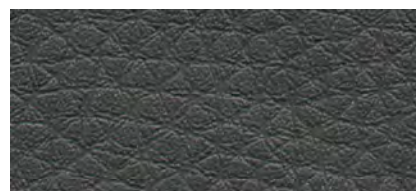
Cereja 01008017



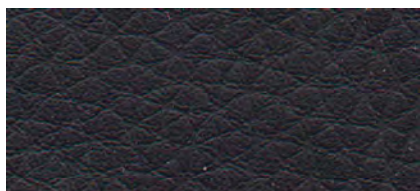
Vinho 01008007



Furacão



Antracite 01008016



Preto 01008001

Cosvi

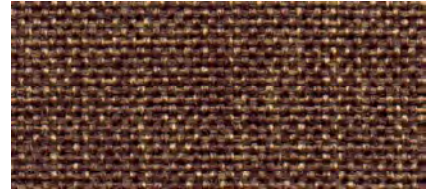
Category A



4025



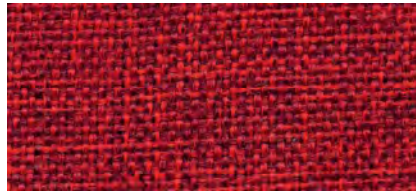
13



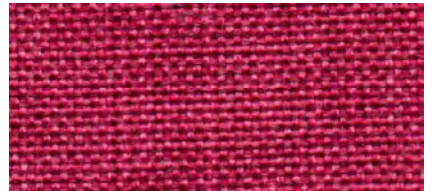
402E



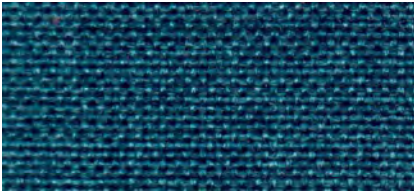
403C



4041



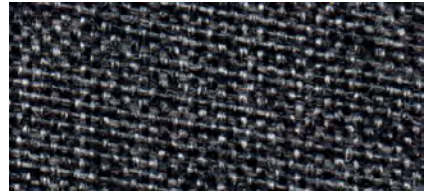
8



3



4023



17

Category A

Ecosued



50C



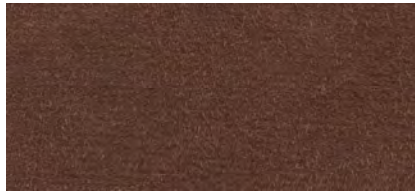
15C



67



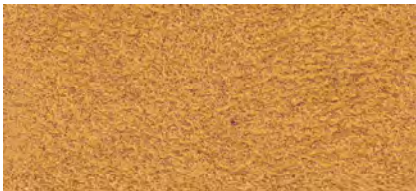
071



811



821



125




235



201

## Category A

REF.	W.DTH	COMPOSITION	MARTINDALE	NOTE
BAYCAST	140	<ul style="list-style-type: none"> <li>• 1% PU</li> <li>• 14% COT</li> <li>• 85% PVC</li> </ul>	40.000	<p>Clear regularly with a damp soapy cloth. Do not use strong detergents, solvent cleaners, polish, wax or patent chemicals harmful for the material. Some stains like ball pen, food colorings should be cleaned off immediately to avoid any permanent absorption into the vinyl. Be careful: back fixed pigments of certain garment or accessories may transfer onto light-colored coated fabrics.</p>
ATLANTIS	140	<ul style="list-style-type: none"> <li>• 87% Polyvinyl</li> <li>• 6,5% Polyester</li> <li>• 6,5% Cotton</li> </ul>	50.000	<p>Clear regularly with a damp soapy cloth. Do not use strong detergents, solvent cleaners, polish, wax or patent chemicals harmful for the material. Some stains like ball pen, food colorings should be cleaned off immediately to avoid any permanent absorption into the vinyl. Be careful: back fixed pigments of certain garment or accessories may transfer onto light-colored coated fabrics.</p>
COSV	140	<ul style="list-style-type: none"> <li>• 100% Polyolefin</li> </ul>	40.000	<p>Professionally dry clear</p> <hr style="border-top: 1px dotted black;"/> <p> UNE 1021 1:2006 (cigarette)</p>
ECOSUED	140	<ul style="list-style-type: none"> <li>• 100% Polyester</li> </ul>	40.000	<p>Rub gently with damp cloth or sponge. Do not use multi-purpose cleaners</p>

Category B

Sparkle



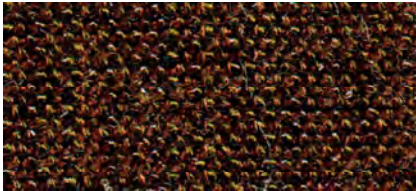
17



15



05



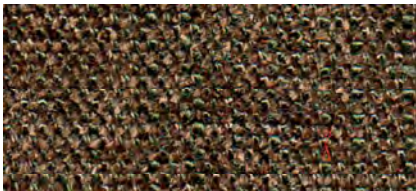
06



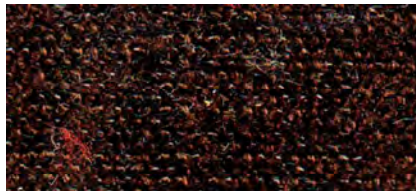
20



13



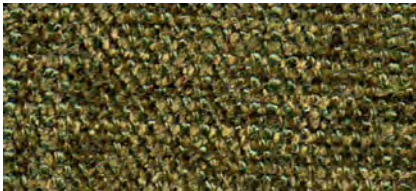
03



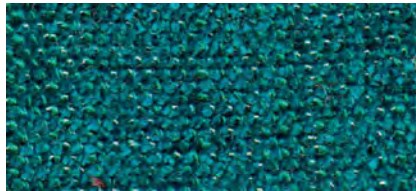
01



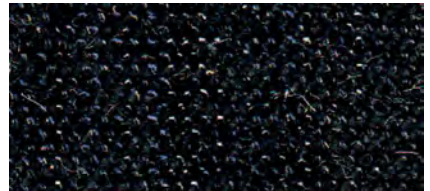
12



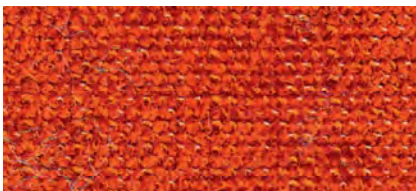
28



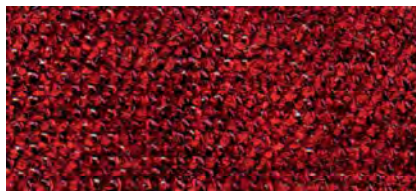
25



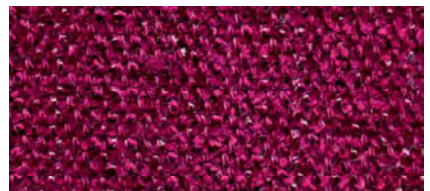
08



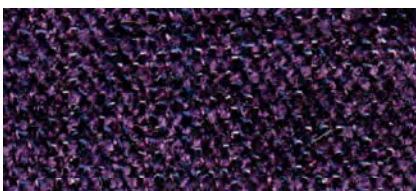
36



33



31



30

Rovid / Miami

Category B



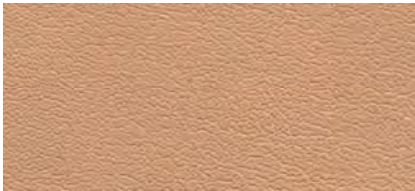
Miami 001



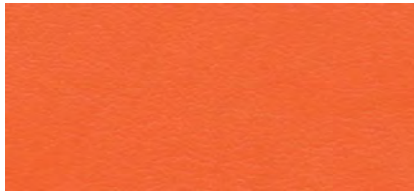
Miami 27



Miami 115



Miami 20



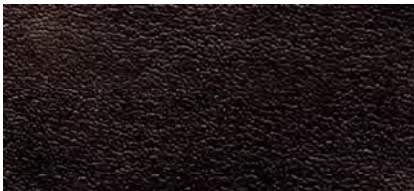
Miami 25C



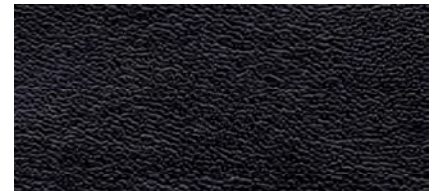
Miami 345



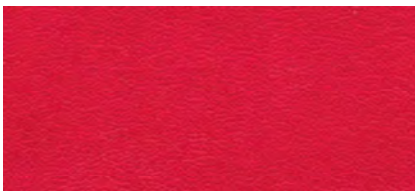
miami 311



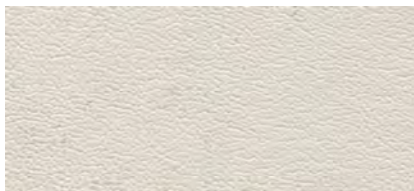
Miami 277



Miami 901



Miami 22C



Rovid 2



Rovid 5



Rovid 10



Rovid 11



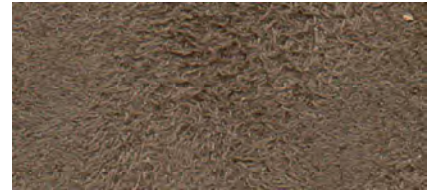
## Category B



823 Chablis



812 Twany



231 Olive



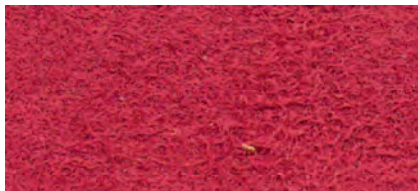
817 Chestnut



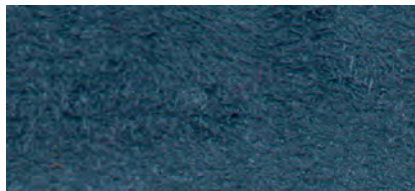
304 Maize



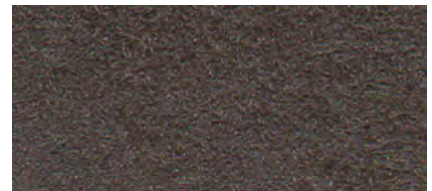
215 Elrr



400 Red



110 Pacific



500 Grey

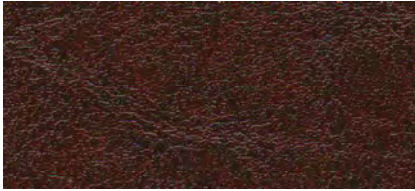
## Suede Colection

# Baycast

# Category B



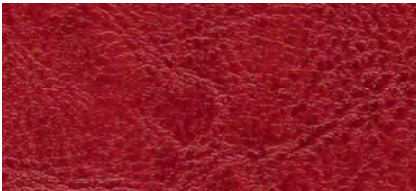
9038



4538



489



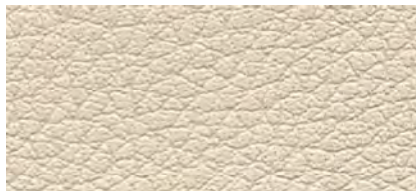
3079

## Category B

## Pantanal



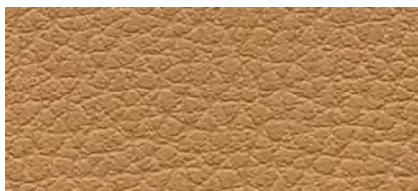
Celg 01086009



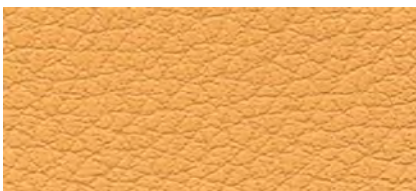
Nacar 01086015



Creme 01086017



Natural 01086016



Amarelo 01086005



Argila 01086017



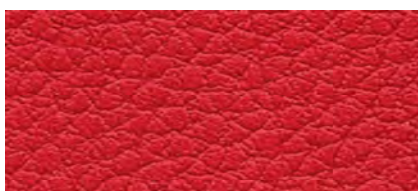
Castanha 01086012



Chocolat 01086018



Grenat 01086010



Encarnado 01086003



Prune 01086019



Eucalipto 01086002



Maça 01086014



Citrino 01086013



Noite 01086004



Prata 01086006

Select

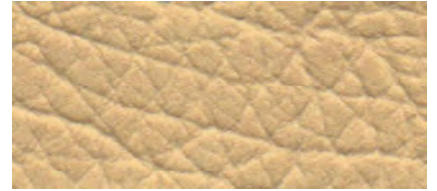
Category B



61982



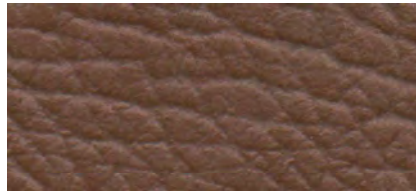
01277036



61981



01277038



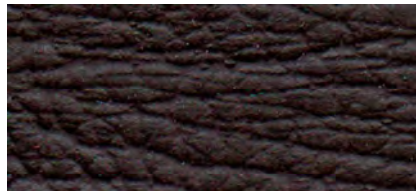
44558



43258



43256



44556



11082



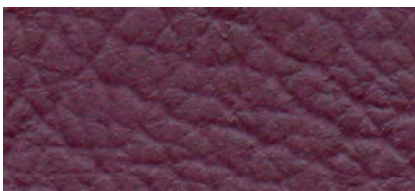
11081



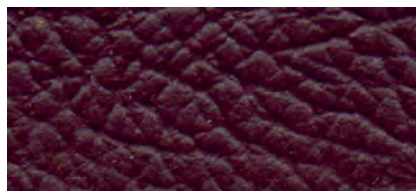
2171:



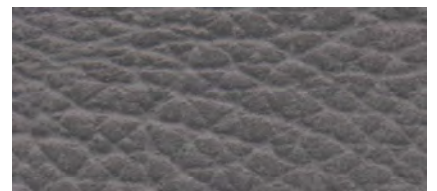
21713



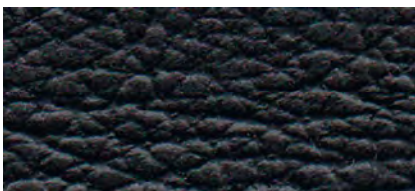
90236



21213



72208



72075

Category B

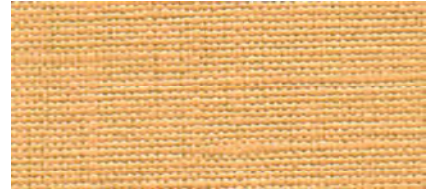
Michigan



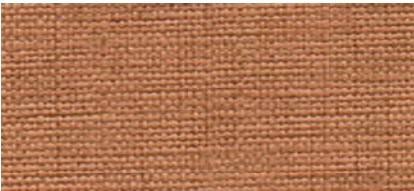
62812



74558



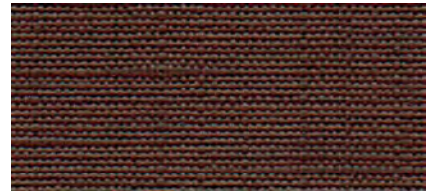
80321



44572



44167



44168



74557



21463



11095



11096



10896



31496



21702



73461











74456



73463

## Category B

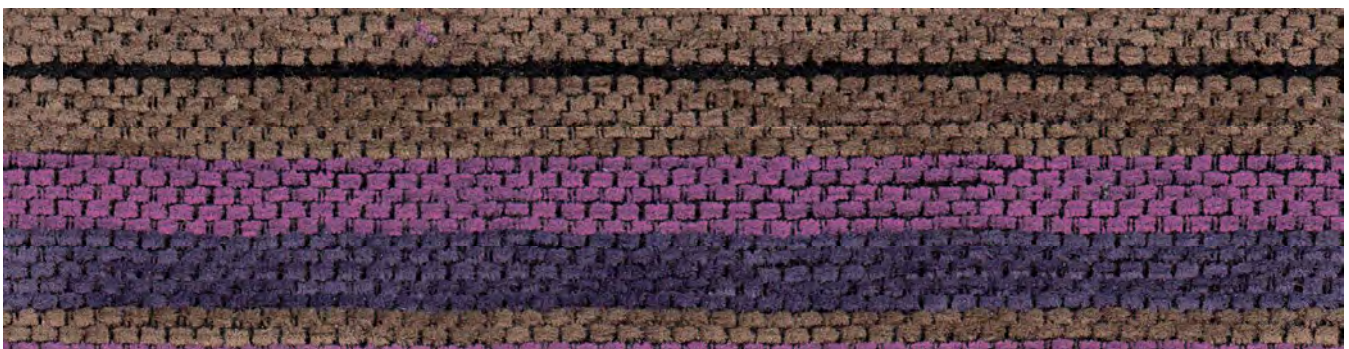
REF.	W.DTH	COMPOSITION	MARTINDALE	NOTE
SPARKLE	138	• 100% Polyester	105.000	Wash less than 30 °, do not bleach, do not spin, dry cleaning  BS 5852 SOURCE 0
ROVIC	140	• 75% PVC • 25% CO/PÉS	50.000	Rub gently with damp cloth or sponge. Do not use multi-purpose cleaners  BS 5852 SOURCE 0
MIAM	140	• 27,4% PU • 57% PVC • 15,6% TC	40.000	Rub gently with damp cloth or sponge. Do not use multi-purpose cleaners  BS 5852 SOURCE 0
SUEDE COLECTION	15C	• 100% Polyester	60.000	Brush or vacuum regularly to remove surface grit and dirt. Wipe up spills immediately using a dry absorbent cloth. Microfibre cleaning cloths are extremely effective without soap for general care and maintenance. Use soap detergent and warm water for more stubborn stains ensuring the area is rinsed thoroughly with clean cold water to remove residue soap. Do not use solvent based cleaning agents. do not wash or trumble dry.  BS7176:1995 (direct) Medium Hazard Category (Ignition Source 0,1 & 5) EN 1021/2 CAL TB 116 & 117, NFPA 260 (USA) Referring to the relevant Solas & IMO regulations for maring use: IMO Res. A652 (16)
BAYCAST	140	• 1% PU • 14% COT • 85% PVC	40.000	Soiled areas can be cleaned simply with a damp cloth, using commercially available cleaning agents and disinfectants - diluted in accordance with manufacturer's instructions for use of product . No warranty:  BS EN 1021-1:2006 (cigarette) & BS EN 1021-2:2006 (match flame equivalent) BS 5852 2006: cluase 11 ignition source 5 (when tested over combustion modified high resilience foam 35kg/m³ Ref: CMHR35)
PANTANAL	140	• 89% Polivinyll • 11% Cottor:	30.00C	Clear regularly with a damp soapy cloth. Do not use strong detergents, solvent cleaners, polish, wax or patent chemicals: harmful for the material. Some stains like ball pen, food colorings should be cleaned off immediately to avoid any permanent absorption into the vinyl. Be careful: badly fixed pigments of certain garment or accessories may transfer onto light-coloured coated fabrics.  M2 (NFP 92 503); EN 1021.1-2; BS 5852 Crib 5- sec 4
SELECT	140	• 76% PVC • 24% Cottor:	50.000	Clean regularly with a damp soapy cloth. Do not use strong detergents, solvent cleaners, polish, wax or patent chemicals: harmful for the material. Some stains like ball pen, food colorings should be cleaned off immediately to avoid any permanent absorption into the vinyl. Be careful: badly fixed pigments of certain garment or accessories may transfer onto light-coloured coated fabrics.  M2 (NFP 92503); BS 5852 CRIB 5; IMO A652
MICHIGAN	140	• 89% PVC • 11% Cottor:	40.000	Clear regularly with a damp soapy cloth. Do not use strong detergents, solvent cleaners, polish, wax or patent chemicals: harmful for the material. Some stains like ball pen, food colorings should be cleaned off immediately to avoid any permanent absorption into the vinyl. Be careful: badly fixed pigments of certain garment or accessories may transfer onto light-coloured coated fabrics.  M2 (NFP 92503); BS7176 CRIB 5; IMO A652



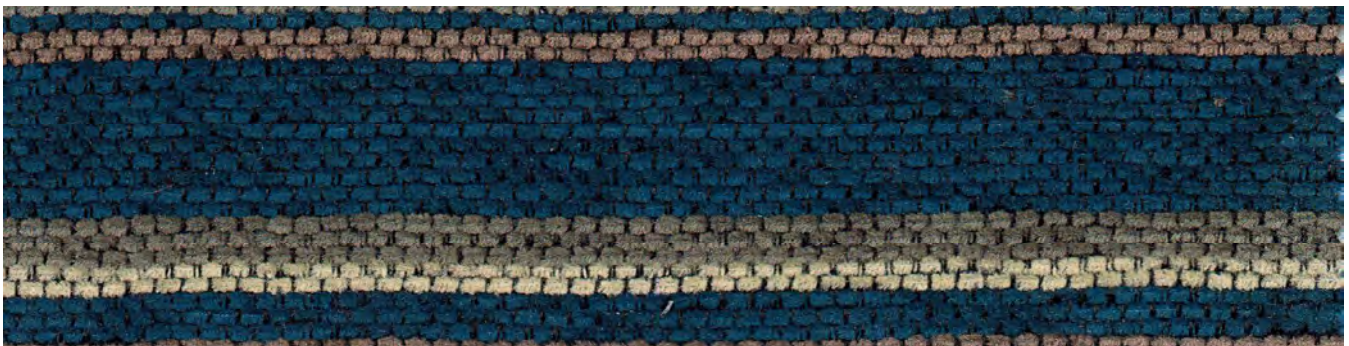
938 Pewter / Sand



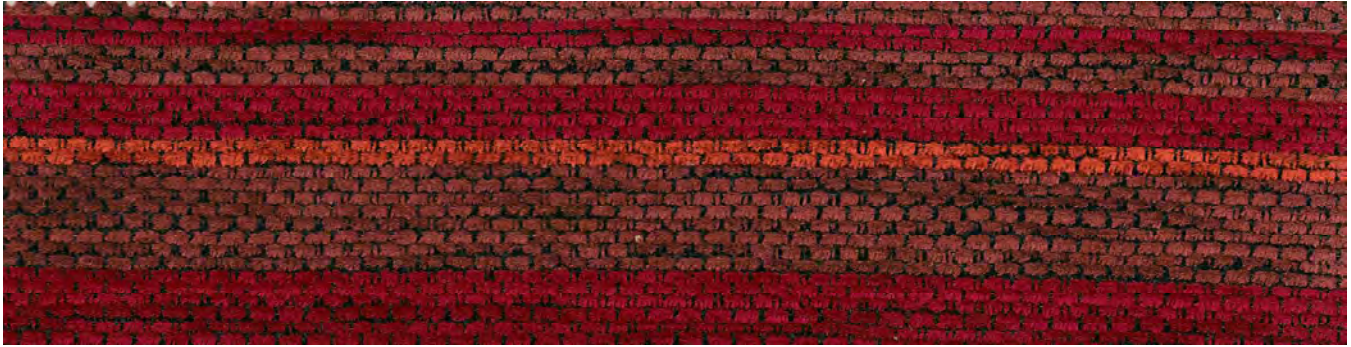
264 Lime / Purple



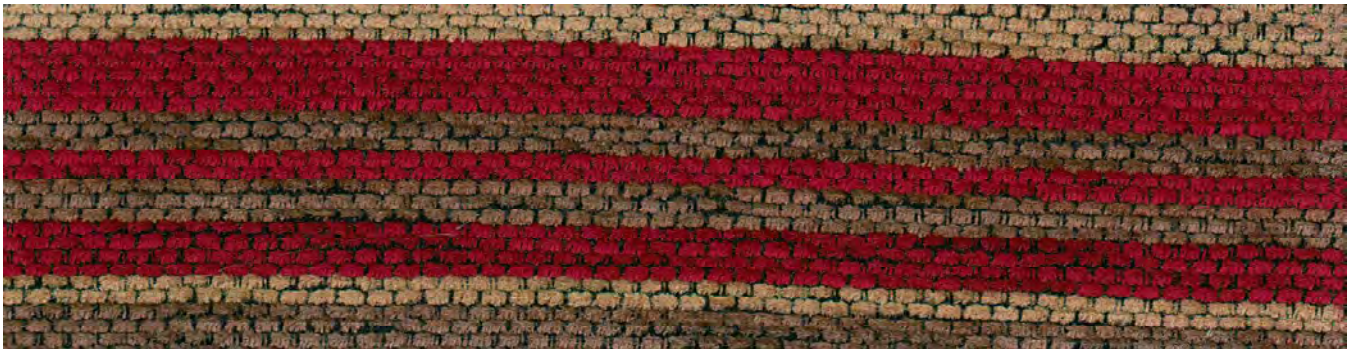
964 Charcoal / Mul-



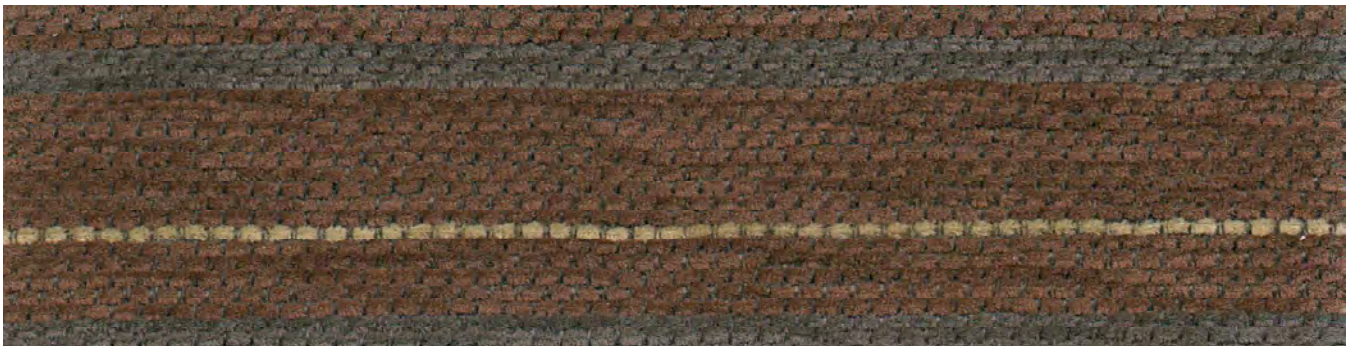
188 Navy / Mocha



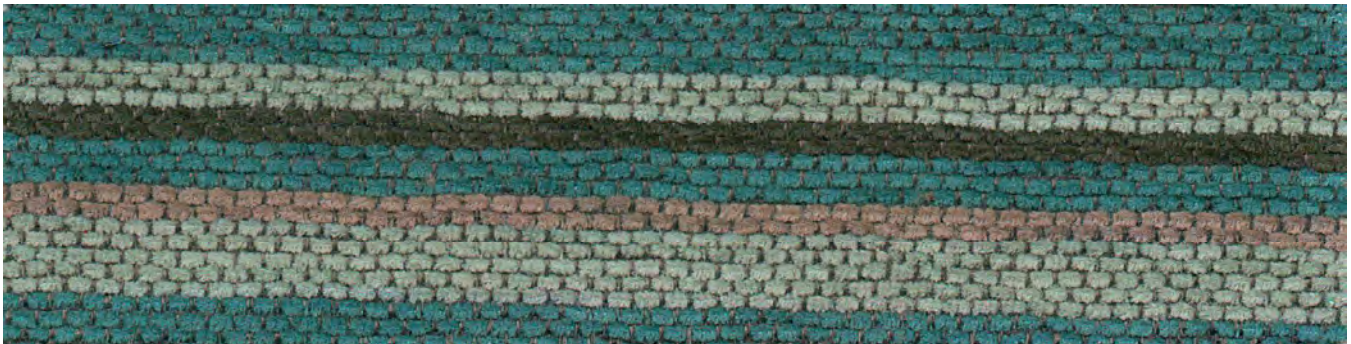
445 Henna / Crimson



471 Red / Mocha



713 Mink / Duck Egg



978 Pewter / Mink



# Category C

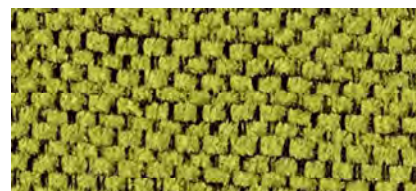
# Vespa



300 Gold



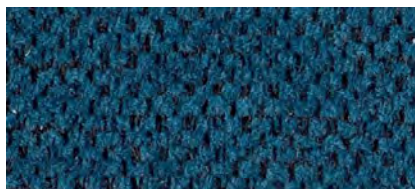
791 Mocha



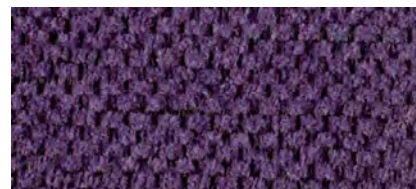
226 Lime



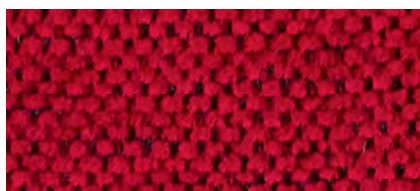
129 Ocean



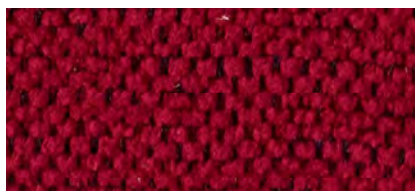
116 Navy



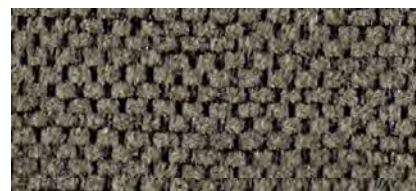
412 Purple



400 Red



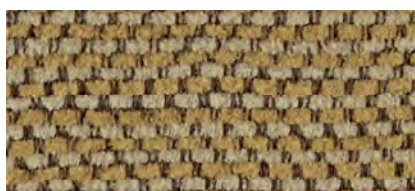
405 Crimsom



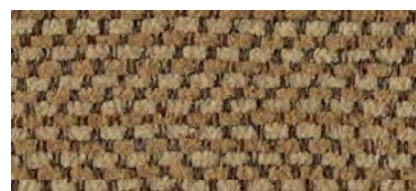
904 Pewter



800 Geige



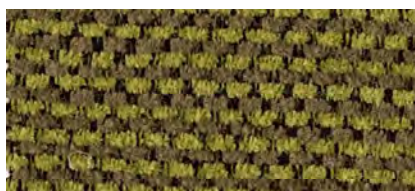
836 Sand



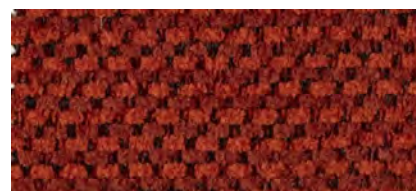
304 Maize



858 Cobble



231 Olive



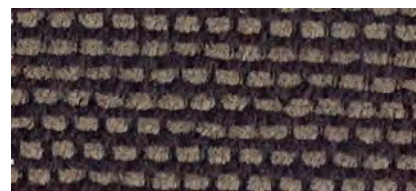
404 Henna



506 Mist



105 Indigo



903 Charcoal

# Sheema

# Category C



505 Pearl



507 Richivory



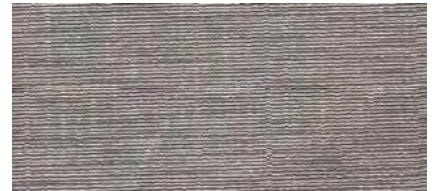
300 Gold



817 Chestnut



702 Chocolate



807 Mushroom



902 Slate



605 Coral



408 terracota



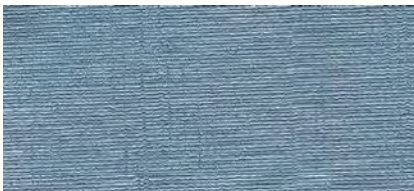
434 Brick Red



608 Fushia



114 Lavender



100 Blue



116 Navy



901 Silver



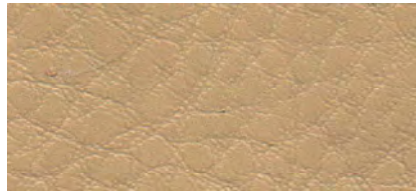
900 Black

# Category C

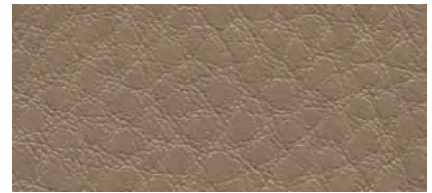
# Cabro



07 Cream



10 Chablis



18 Putty



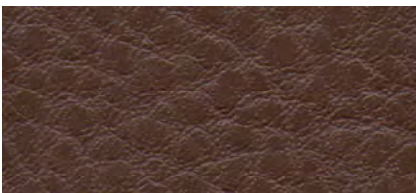
09 Hide Green



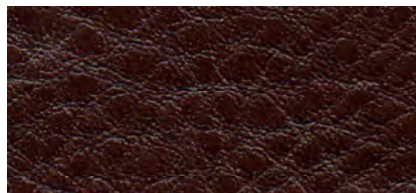
13 Mushroom



19 Saddle



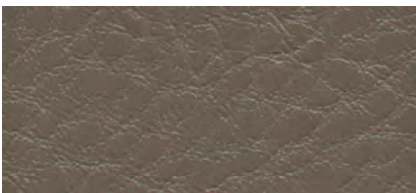
20 Café



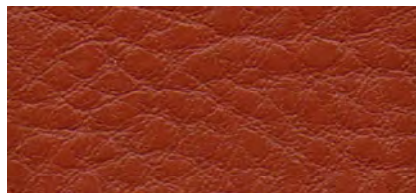
02 Espresso



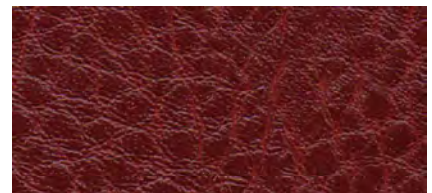
14 Storm



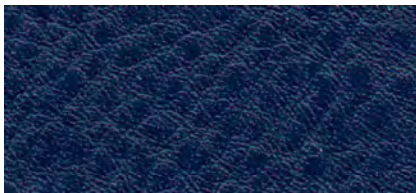
16 Taupe



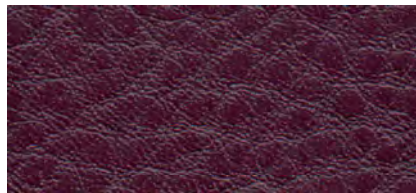
03 Red



04 Burgundy



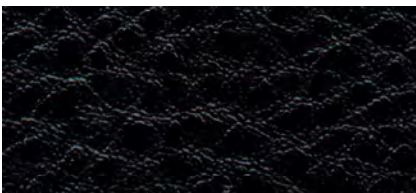
05 Navy



08 Mulberry



12 Forest



06 Black

# Aston

# Category C



805 Cream



823 Chablis



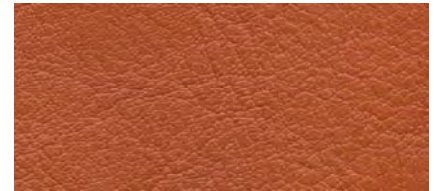
905 Dove



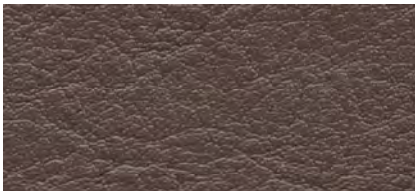
900 Black



814 Espresso



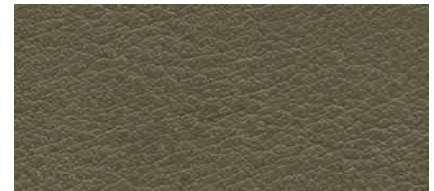
411 Spice



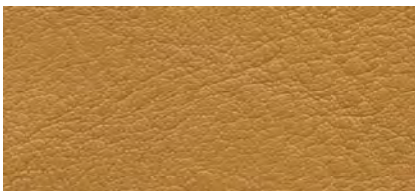
703 Mink



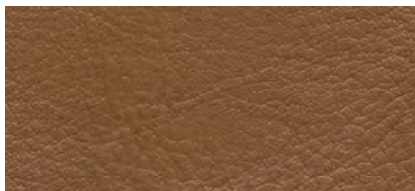
904 Pewter



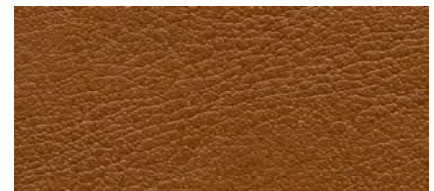
204 Moss



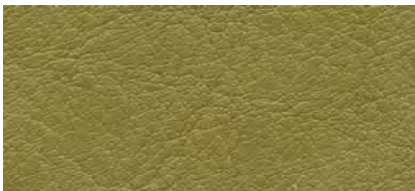
300 Gold



815 Buff



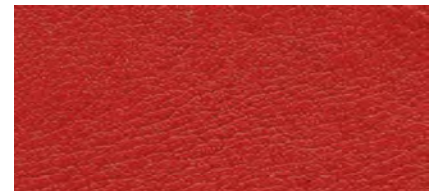
801 Tan



226 Lime



407 Burgundy



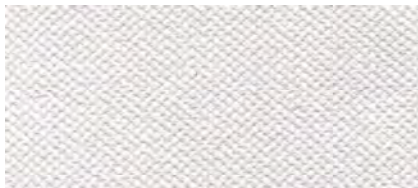
400 Red



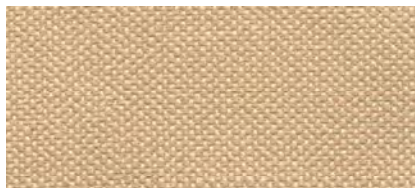
807 Mushroom

## Category C

## Silvertex



122-4004 Ice



122-1051 Sisal



122-1010 Bege



122-0009 Taupe



122-0073 Luggage



122-005 Mocca



122-4024 Meteor



122-6062 Melon



122-2003 Cobre



122-2064 Wine



122-2011 Rec



122-6004 Rubín



122-5020 Basil



122-5008 Pistacho



122-3007 Sapphire



122-4001 Plata

# Valência

# Category C



Olive



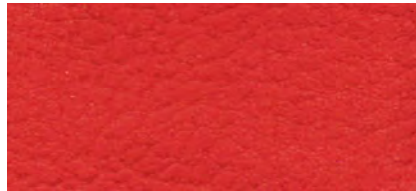
Pink



Lavendel



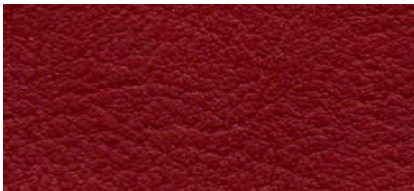
Amethyst



2075 Rot



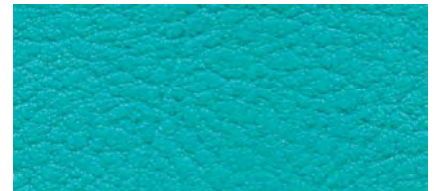
2074 Kirsche



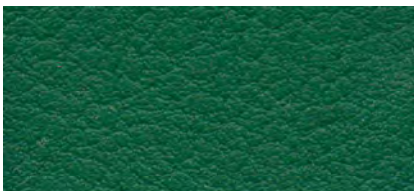
2062 Port



5056 Jade



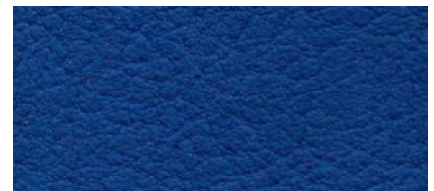
5057 Turkis



5069 Grur



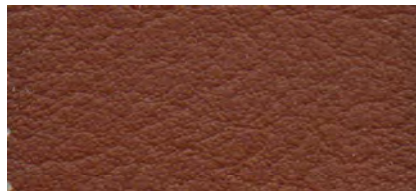
Baltic



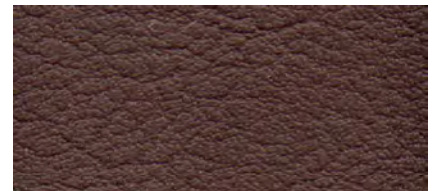
3067 Delft



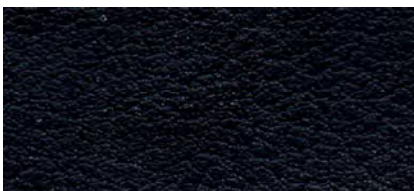
3068 Marine



0033 Buche



0020 Mocca



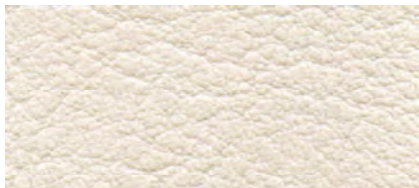
9035



5041 Apfel

## Category C

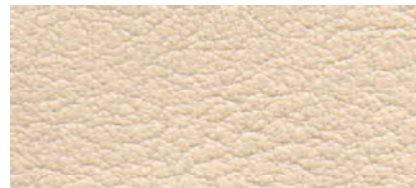
## Valência



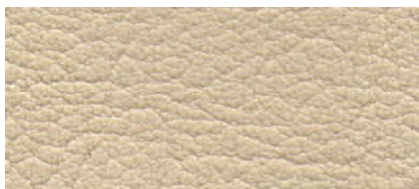
B032 Weiss



4040 Auster



1048 Sisal



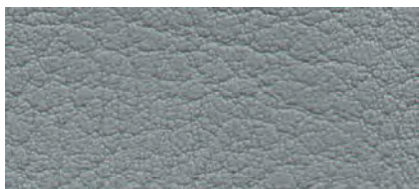
1049 Leinen



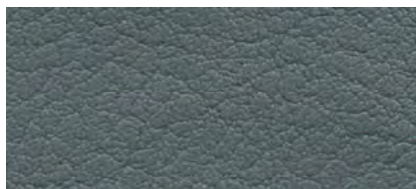
Beige



Traupe



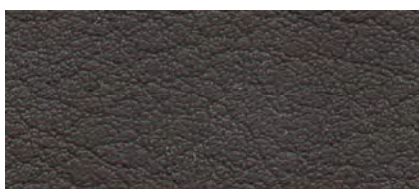
Perle



Platin



Light Gray



Meter



4042 Titan



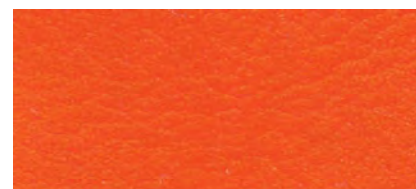
6012 Safran



Jonne



6013 Melone



6019 Orange

Diamond

Category C



501



502



506



515



520



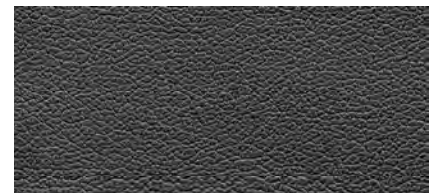
523



525



569

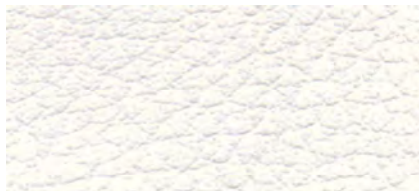


58C

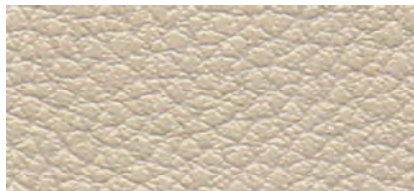


## Category C

## Ginko



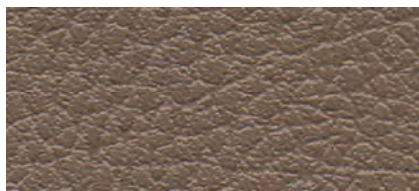
Blanc 01332019



Seigle 01332027



Dune 01332023



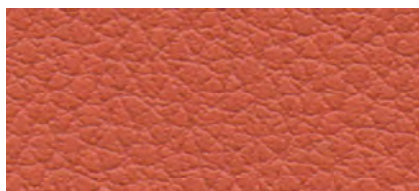
Terre 01332048



Café 01332049



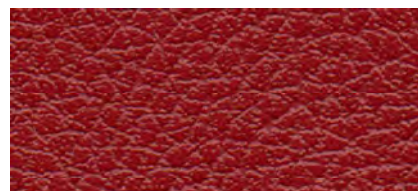
Citrouille 01332015



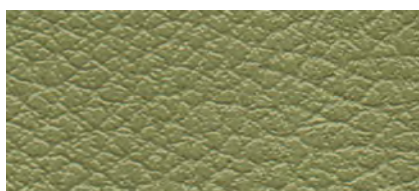
Tomette 01332014



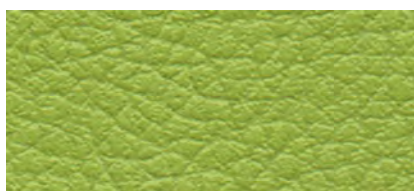
Groseille 01332026



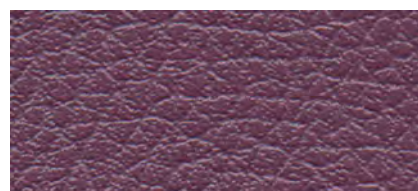
Morgon 01332016



Amande 01332020



Granny 01332052



Quetsche 01332007



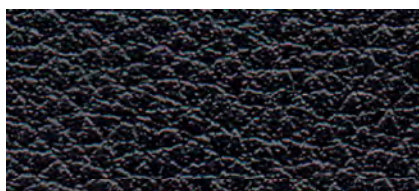
Lilas 01332008



Mastic 01332013



Souris 01332004



Anthracite 01332002

7086

Category C



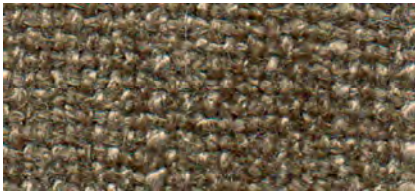
1



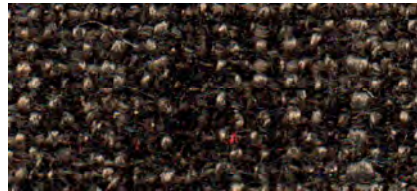
3



2



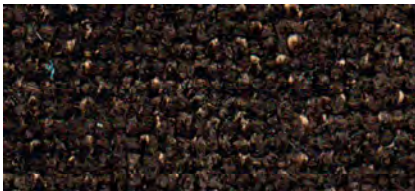
4



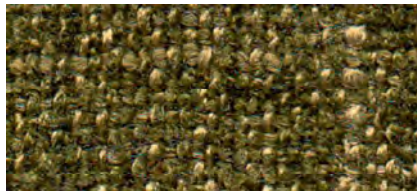
7



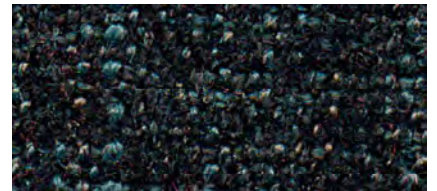
5



6



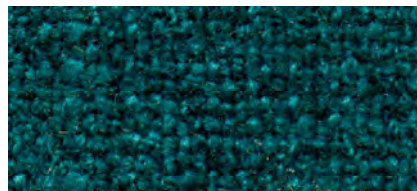
10



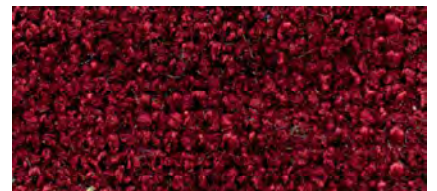
9



11



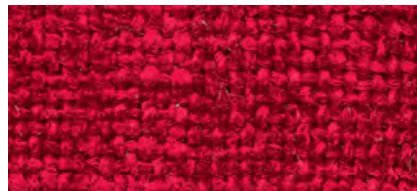
12



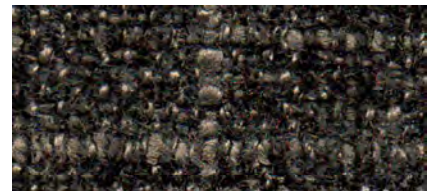
15



14



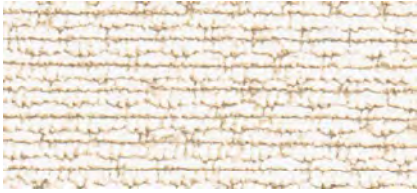
13



8

# Category C

7113



1



2



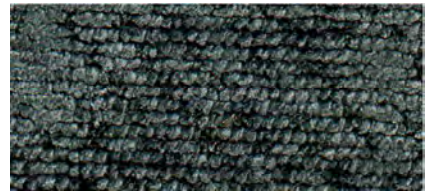
5



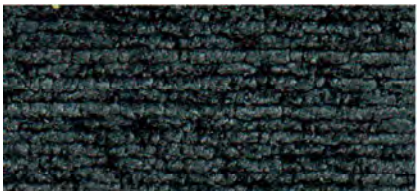
3



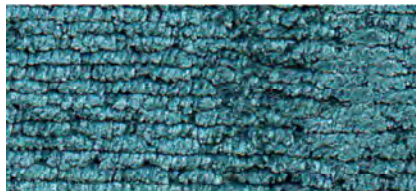
4



11



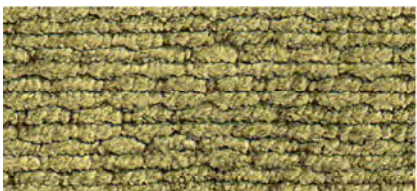
12



6



10



7



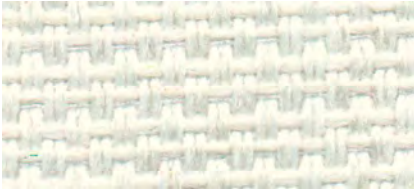
8



9

7121

Category C



1



2



3



5



8



14



4



6



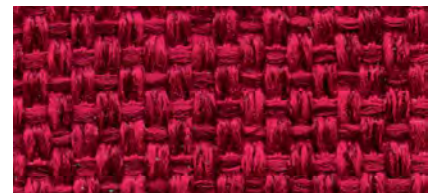
12



7



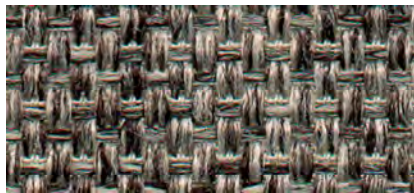
9



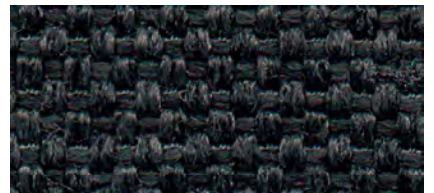
10



13



11



15

# Category C

# Energetic



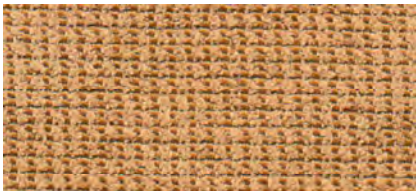
20



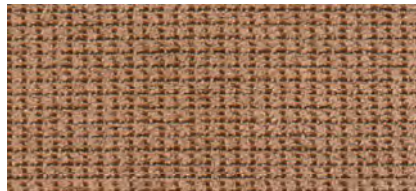
14



22



24



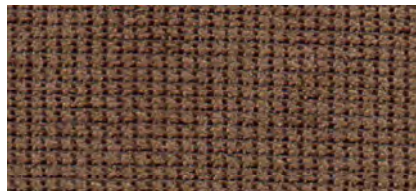
26



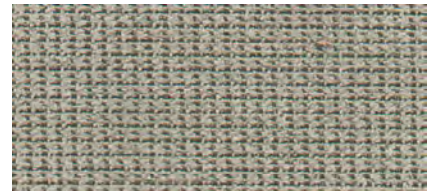
13



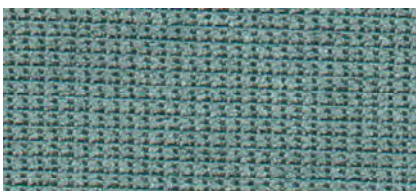
10



11



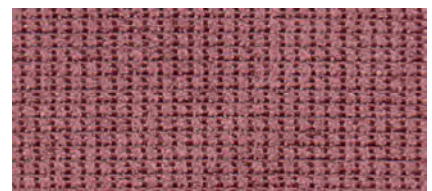
08



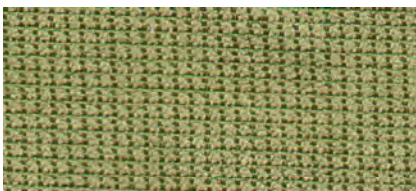
02



07



38



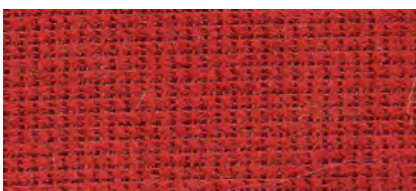
29



27








31



33

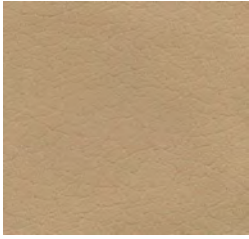
## Category C

REF.	WIDTH	COMPOSITION	MARTINDALE	NOTE
SOHO CARNABY	140	• Polyester	45.000	<p>Brush or vacuum regularly to remove surface grit and dirt. Wipe up spills immediately using a dry absorbent cloth. Microfibre cleaning cloths are extremely effective without soap for general care and maintenance. Use soap detergent and warm water for more stubborn stains ensuring the area is rinsed thoroughly with clean cold water to remove residue soap. Do not use solvent based cleaning agents. Do not wash or tumble dry.</p> <p>BS5852 Part 2 Ignition source 5   EN 1021/2            NFPA 260 (USA)            CAL TB 116 &amp; 117 (USA);</p>
VESPA	140	• Polyester	45.000	<p>Brush or vacuum regularly to remove surface grit and dirt. Wipe up spills immediately using a dry absorbent cloth. Microfibre cleaning cloths are extremely effective without soap for general care and maintenance. Use soap detergent and warm water for more stubborn stains ensuring the area is rinsed thoroughly with clean cold water to remove residue soap. Do not use solvent based cleaning agents. Do not wash or tumble dry.</p> <p>BS5852 Part 2 Ignition source 5   EN 1021/2            NFPA 260 (USA)            CAL TB 116 &amp; 117 (USA)</p>
SHEEMA	140	<ul style="list-style-type: none"> <li>• 96% Vinyl</li> <li>• 4% PU</li> </ul> BACKING <ul style="list-style-type: none"> <li>• 100% Cotton</li> </ul>	100.000	<p>Use brush and tepid soapy water (non alkaline). Rinse with clear water. Never use polish, stair: remover or solvent.</p> <p>BS5852 Part 1 ignition source 0,1, BS5852 Part 2 ignition source 5, EN1021/2, IMO RES. A.652 (16) IMO RES. MSC. 61 (67) annex 1, part 8, NFPA 26C</p>
CABRO	140	<ul style="list-style-type: none"> <li>• 96% Vinyl</li> <li>• 4% PU</li> </ul> BASECLOTH: <ul style="list-style-type: none"> <li>• 100% Cotton</li> </ul>	100.000	<p>Use brush and tepid soapy water (non alkaline). Rinse with clear water. Never use polish, stair: remover or solvent.</p> <p>M2 (NFP 92 503), BS 5852 part 2: source 5 CRIB 5</p>
ASTON	140	<ul style="list-style-type: none"> <li>• 94% vinyl.</li> <li>• 6% Polyurethane</li> </ul> BASECLOTH: <ul style="list-style-type: none"> <li>• 100% Cotton</li> </ul>	100.000	<p>It is important to clean and care for the fabric on a regular basis to maintain its condition and appearance. Most stains can be removed using the wipe clean method. Wipe clean regularly with a damp cloth to remove dust particles and light grime. Remove spillages immediately with an absorbent dry cloth. For general grime, use a soft brush and tepid soapy water (non-alkaline) and rinse clean with clear water. Dry with an absorbent cloth. Bodily fluids should be removed initially with cold water and then cleaned as above. Never use polish, stair: remover or solvent. For extreme instances of heavy soiling 5% bleach solution can be used</p> <p>BS5852 Part 1 Ignition Source 0,1, BS5852 Part 2 ignition source 5, EN1021.1 and EN 1021.2, IMO RES A.652 (16), IMO RES. MSC. 61(67) Annex 1, Part 8, NFPA 260.</p>
S.LVERTEX	137	<ul style="list-style-type: none"> <li>• 100% Polyester</li> </ul> Hi-Loft2	300.000	<p>Use brush and tepid soapy water (non alkaline). Rinse with clear water. Never use polish, stair: remover or solvent.</p> <p>BS EN1021/PART1 AND 2            IMO A652(16)</p>
VALÈNCIA	137	<ul style="list-style-type: none"> <li>• 100% Polyester</li> </ul> Hi-Loft2 BASECLOTH: <ul style="list-style-type: none"> <li>• 100% Vinyl</li> </ul>	100.000	<p>Use brush and tepid soapy water (non alkaline). Rinse with clear water. Never use polish, stair: remover or solvent.</p> <p> BS EN 1021 /PART1 AND 2; UNE 1021 / PART1 AND 2</p>
DIAMOND	140	<ul style="list-style-type: none"> <li>• 33% Cotton</li> <li>• 40% Polyester</li> </ul> BASECLOTH: <ul style="list-style-type: none"> <li>• 100% PU</li> </ul>	200.000	<p>Protect synthetic leather from direct sunlight and sources of heat to prevent colour fading. For general cleaning only use a dry soft cloth. If necessary, wipe the whole surface with a clean, soft cloth wrung in soapy water. Never use the agents containing benzene and other solvents. Never rub the stains. If vacuum cleaning, use a soft nozzle to avoid scratching the surface.</p> <p> M2 Firex</p>
GINKO	140	<ul style="list-style-type: none"> <li>• 85% PVC</li> <li>• 15% Cotton</li> </ul>	100.000	<p>Clear regularly with a pH neutral soap and a soft brush. Always rinse with clear water. Do not use strong detergents, solvent cleaners, polishers wax, patent chemicals or other products not recommended by Cotting. Some stains like ball pen, coffee, wine eosin and also jeans, should be cleaned immediately to avoid any permanent absorption into the vinyl. Be careful: we cannot be held responsible for transfer problems generated by dyes of poor quality. Cotting waives all responsibility for problems arisen out of ignoring the cleaning instructions.</p> <p> M1 ( NFP 92503); AM 18; BS 5852 crib 5; B2 (Din 4102); EN 1021,1-2-3; IMO A652; JAR 25 / Far 25.853</p>

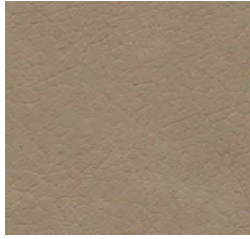
## Category C

7086	140	<ul style="list-style-type: none"> <li>• 89% Polyester</li> <li>• 11% Viscose</li> </ul>	100.000	<p>Wash less than 30 °, an iron point, do not bleach, do not spin, dry cleaning</p> <p><del>★</del> Call 117 (complies), FMVSS 302 (pasS); NFPA 260/LFAC (class I); BS5852 Source 0 (pass);</p>
7113	140	<ul style="list-style-type: none"> <li>• 100% Polyester</li> </ul>	145.000	<p>Dry cleaning</p> <p><del>★</del> so at the request</p>
7121	140	<ul style="list-style-type: none"> <li>• 100% Polyester</li> </ul>	40.000	<p>Wash less than 30 °, an iron point, do not bleach, do not spin, dry cleaning</p> <p><del>★</del> Call 117/SE (complies); MVSS 302 (pass); NFPA 260/UFAC (class I); BS5852 Source 0 (pass);</p>
ENERGETIC	150	<ul style="list-style-type: none"> <li>• 89% Polyester</li> <li>• 11% Cotton</li> </ul>	40.000	<p>Wash less than 30 °, an iron point, do not bleach, do not spin, dry cleaning</p> <p><del>★</del> BS 5852 SOURCE 0</p>

## Ultimate



823 Chablis



925 Putty



703 Mink



817 Chestnut



807 Mushroom



814 Espresso



429 Chilli



414 Wine



226 Lime



155 Duck Egg



902 Slate



900 Black

## Category D



## Category D

## Sitingray



905 Dove



300 Gold



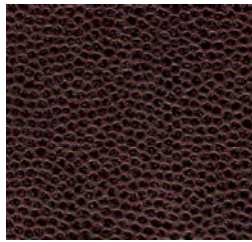
904 Pewter



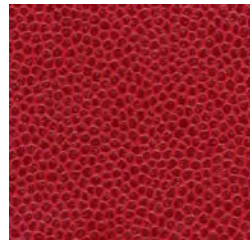
907 Copper



807 Mushroom



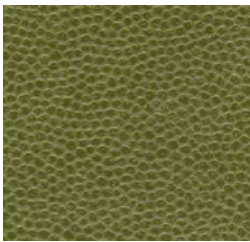
814 Espresso



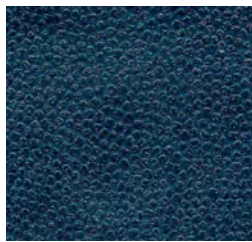
400 Red



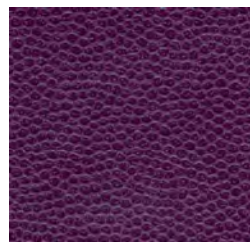
406 Claret



226 Lime



192 Ink



412 Purple

# Aspen

# Category D



04



03



07



01



08



11



09



10



35



02



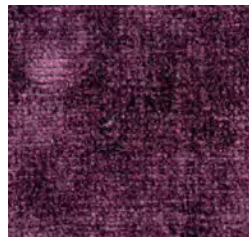
14



13



19



21



25



16

## Category D



Snow



Divine



Dove



Parchment



Putty



Taupe



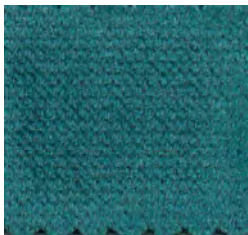
Mushroom



Ebony



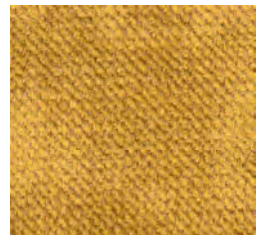
Seaspray



Peacock



Moss



Gold



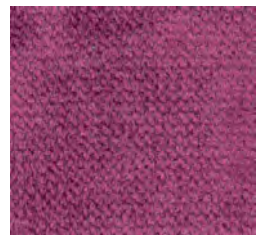
Red



Amethyst



Lavender



Boysenberry

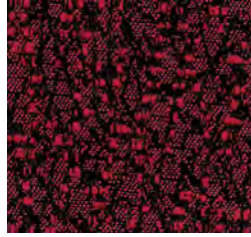
## Mystere

# Alcazar

# Category D



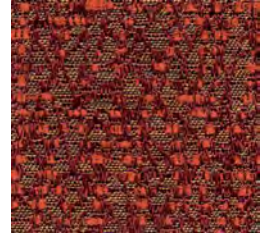
Shiraz 440 Scarlet



Merlot 440 Scarlet



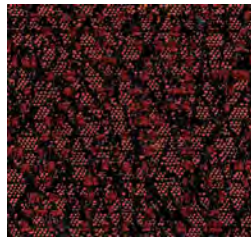
Shiraz 406 Claret



Merlot 404 henna



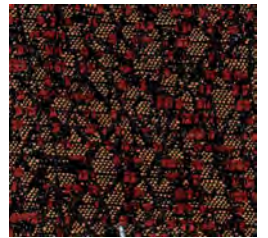
Shiraz 404 Henna



Merlot 406 Claret



Merlot 408 Terracotta



Merlot 441 Red / Amber



Shiraz 441 Red / Amber

## Category D



Merlot 608 Fuchsia



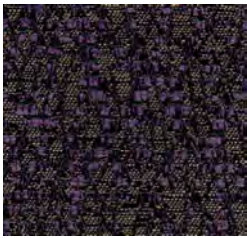
Merlot 624 Mulberry



Shiraz 624 Mulberry



Shiraz 412 Purple



Merlot 412 Purple



Merlot 791 Mocha



Merlot Gold



Shiraz 841 Biscotti



Merlot 705 Cappuccino



Shiraz 300 Gold



Merlot 841 Biscotti



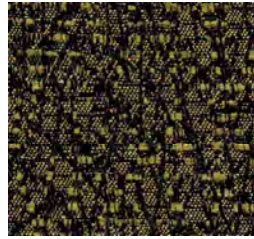
Shiraz 705 Cappuccino

## Alcazar

## Alcazar



Shiraz 226 Lime



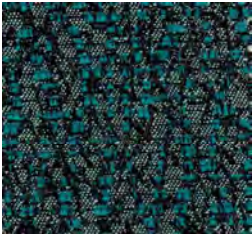
Merlot 226 Lime



Merlot 252 Willow



Shiraz 252 Willow



Merlot 129 Ocean



Shiraz 129 Ocean



Merlot 100 Blue



Shiraz 184 Blue / Faw



Merlot 184 Blue / Faw

## Category D